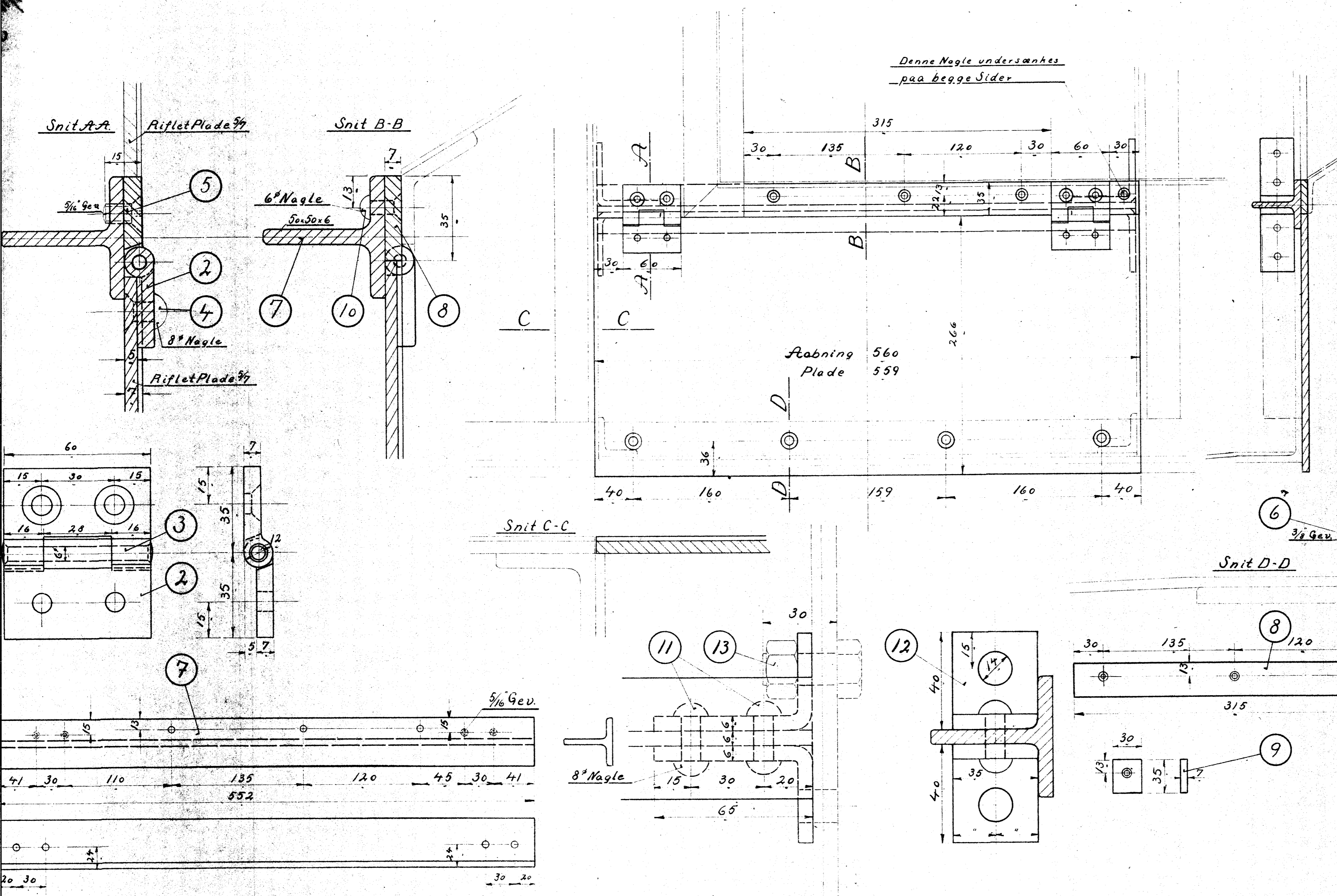
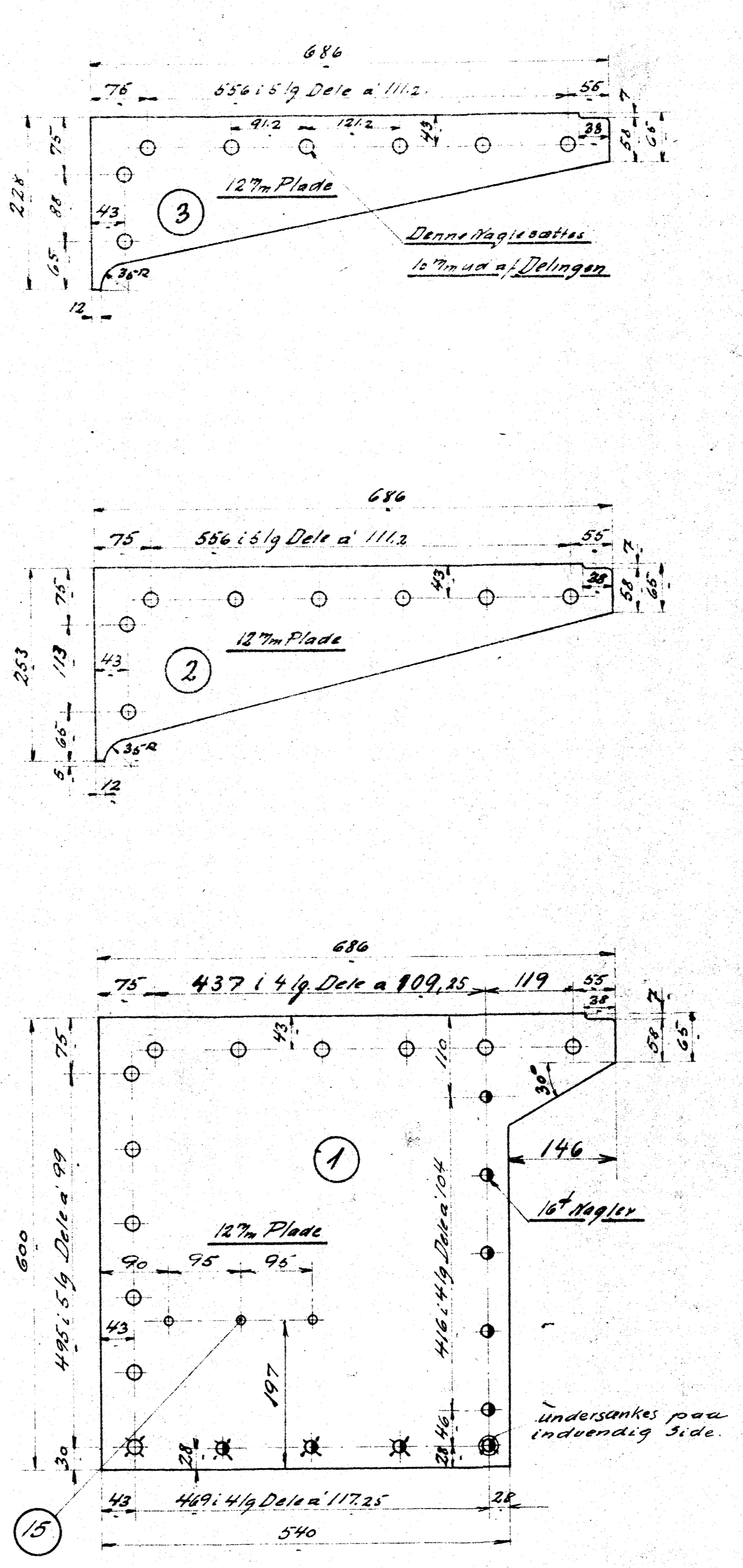
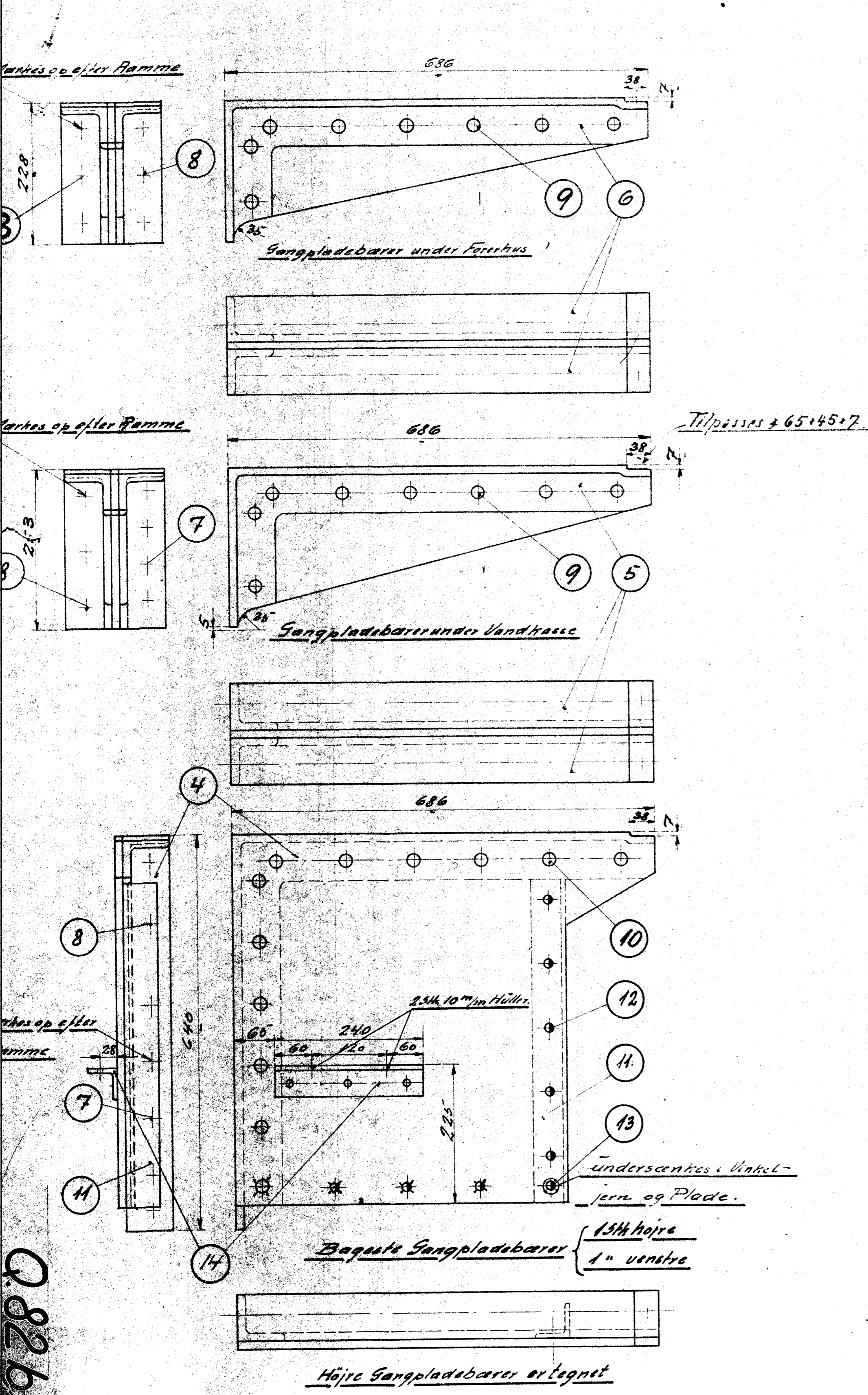


1	2	Plade-riflet	Fluss jern	570x530
2	4	Hængsel	"	450x150
3	4	Stift til do.	Messing	6x30
4	8	Nagle " do.	8x20 jern	Mag.
5	8	Skrue " do.	5/16x15	"
6	8	do " do.	3/8x15	"
7	2	Tjern	Fluss jern	50x50x1150
8	2	Mellemlag.	"	35x7x650
9	2	do.	"	70
10	8	Nagle til do.	6x18 jern	Mag.
11	8	do	8x30	"
12	8	Fladjernsvinkel	"	35x5x35
13	8	Bolt 3/4 Tegn. GL-14	80 Stal. 92x092 Nr. 25-27	



Q.82b.

Klapi Gangplade over Cylyndre			
D. Tender, loko Litra Q			
Gr. 11			
Størrelse	2:5		
Dato	7-2-30	1:1	GL 540



Stykliste Nr. 42263				
Nr.	Stk.	Betegnelse	Størrelse	Material
1	2	Plade	686x600x12	Fluss jern
2	2	do	258x686x12	"
3	2	do	228x686x12	"
4	2	do	475x75x12x128	"
5	4	do	494x23x7	"
6	4	do	494x23x7	"
7	18	Nagler	23x80	Malle jern
8	22	do	23x70	"
9	32	do	20x66	"
10	24	do	20x55	"
11	2	do	55x53x7x520	Fluss jern
12	10	Nagler	16x120	Fluss jern
13	2	do	16x35	"
14	2	do	450x50x7x240	Fluss jern
15	6	Nagler	13x40	Fluss jern

Q.82b.

Gangpladebarer			
D. Tender, loko Litra Q			
Gr. 11			
Størrelse	1:5		
Dato	26-10-29	1:5	GL 544

Q.82b.